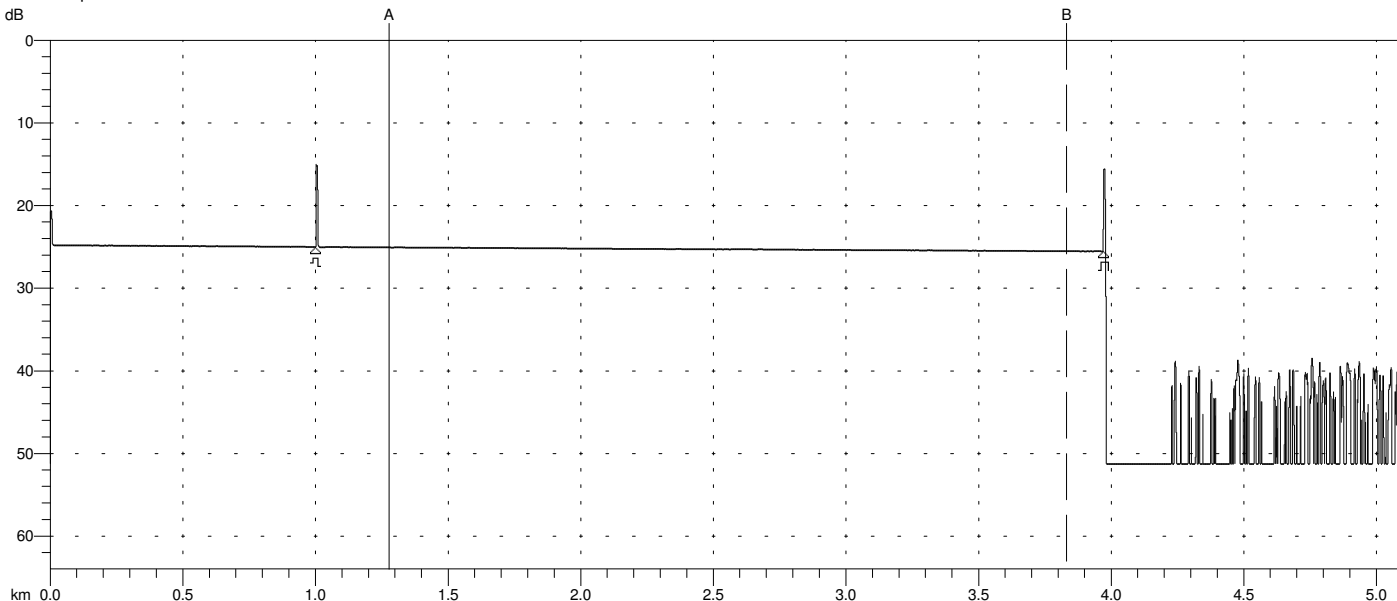


kurnell larpa1550 107.SOR

5 km/0.200 m



A: 1.2771 km	Index: 1.468200	[H] 50ns / 5.0m
B: 3.8312 km	Splice Loss: -0.010 dB	Avg: Fast 11776
A -> B: 2.5541 km	Reflectance: N/A	/1550 nm/SM

----- Page 1 -----

```
[ Language: EN ]
[ Cable ID: ]
[ Fiber ID: 107 ]
[ Wavelength: 1550 ]
[ Org. Loc: ]
[ Term. Loc: ]
[ Cable Code: ]
[ Condition: OT ]
[ Operator: ]
[ Comment: ]
[ Supplier: Anritsu ]
[ OTDR Model: MT9083A-057 ]
[ S/N: 6200706966 ]
[ Optics Mod: ]
[ S/N: ]
[ S/W Rev.: 5.00 ]
[ Other: ]
```

Primary Trace: kurnell larpa1550 107.SOR
 Date: 10/07/10 Range: 5 km
 Time: 02:14 PM Resolution: 0.200 m
 Product Type: MT9083A-05 Pulse Width: 50 ns
 Opt. Module: Index: 1.468200
 Fiber Type: Singlemode WaveLength: 1550 nm
 FAS Thresholds: Horz. Shift: 0.0000 km
 Loss: 0.05 dB Vert. Shift: 0.00 dB
 Reflectance: -60.00 dB No. Averages: 11776
 Fiber Break: 10.00 dB
 Backscatter: -81.50 Trace Type: Anr SR4731
 Trace Flags: Analysis
 ORL: N/A

Analysis Results -- kurnell larpa1550 107.SOR

Feature #/Type	Location (km)	Event-Event (dB) (dB/Km)	Loss (dB)	Refl (dB)
1/R	1.0016	0.19 0.187	0.02	-44.66
2/E	3.9706	0.52 0.174	>10.00	-44.69

Overall (End-to-End) Loss: 0.72 dB